

Small Scale Irrigation (SSI) coop agreement.



SIMON LANGAN
5th September 2013
Lilongwe

Photo: David Brazier/IWMI



Introduction

- Donor: US-AID
- Partners: Texas A& M (lead), IWMI, IFPRI, ILRI (and national organisations)
- Duration: 5 years
- Value approx 12 m USD
- Point of Departure: Ag Water Solutions



Smallholder irrigation

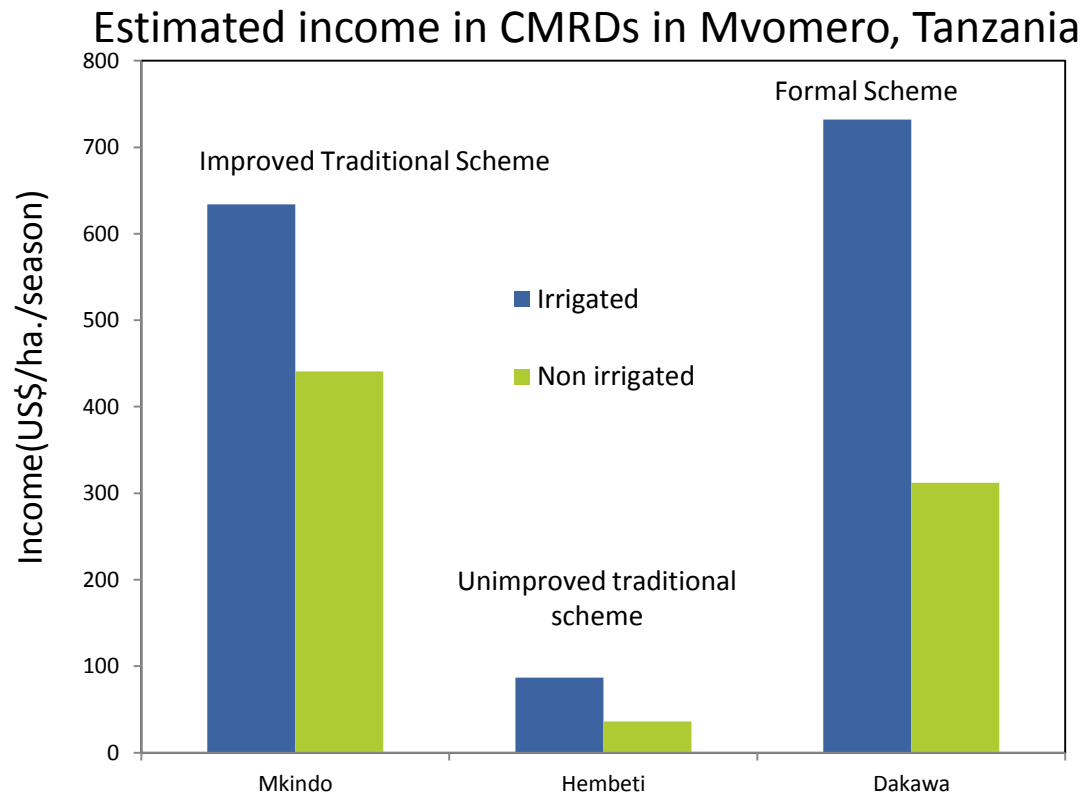
1. Initiated and financed by smallholders themselves
2. Owned individually or by small informal groups
3. Used to irrigate small plots (<2 ha)
4. Investment costs typically low and profit margins typically high



Smallholder irrigation: Provides incomes when farmers need it most

Burkina Faso: small reservoirs - vegetable and rice production – dry season incomes up by US\$200-600.

Tanzania:
community
managed
river
diversions
(CMRD)
increase
yields and
incomes.



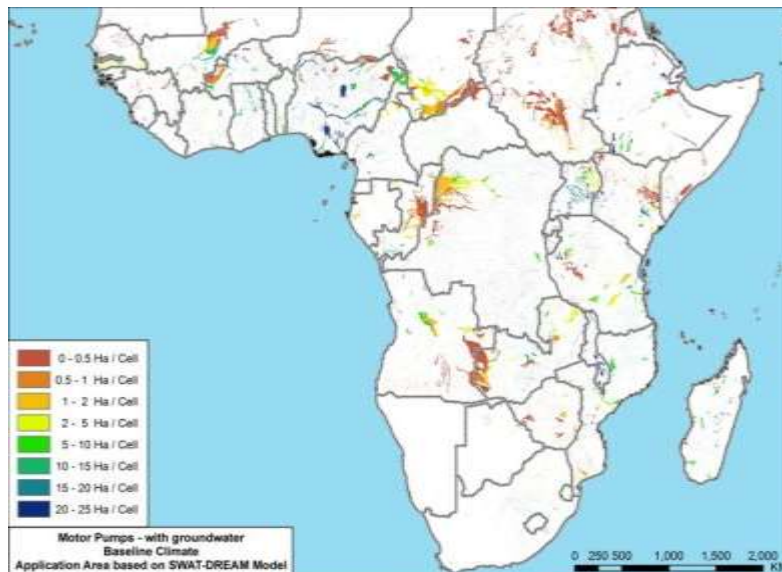
Potential to impact millions

SSA: Potential yield improvements from AWM investments

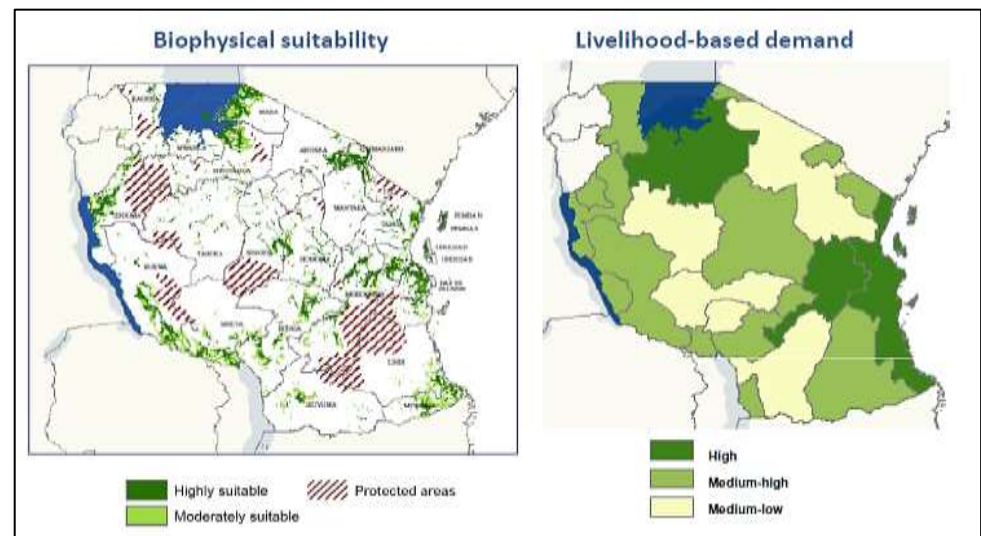
Crop	Low-input, rainfed yield (t/ha)	High input, irrigated yield increase (%)
Maize	1.0	141-195
Paddy	0.9	270-283
Groundnuts	0.7	238-251

SSA: motor pumps

- 185 million potential rural beneficiaries
- Net revenues up to US\$22 billion/yr.



Tanzania: motor pumps could benefit 2-4 million people (8-12% of rural households) .



Lacks supportive institutional structures

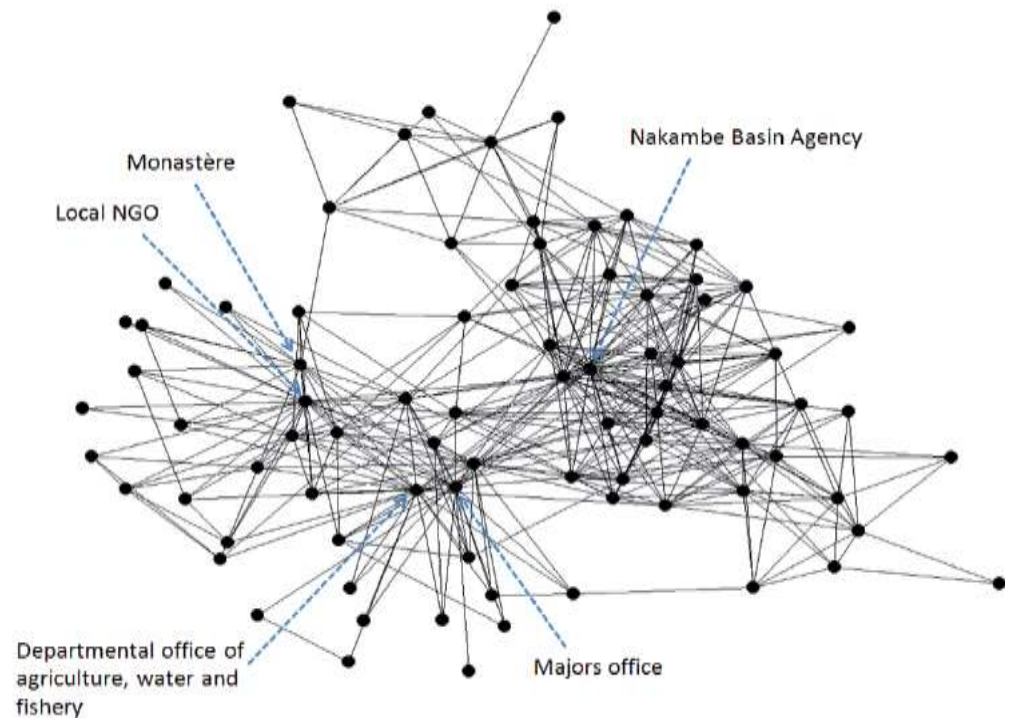
Existing governing bodies are often not adapted to handle the challenges posed by this alternative mode of irrigation development. Smallholder irrigation and AWM lacks an institutional 'home'.

Nariarlé Basin, Burkina Faso

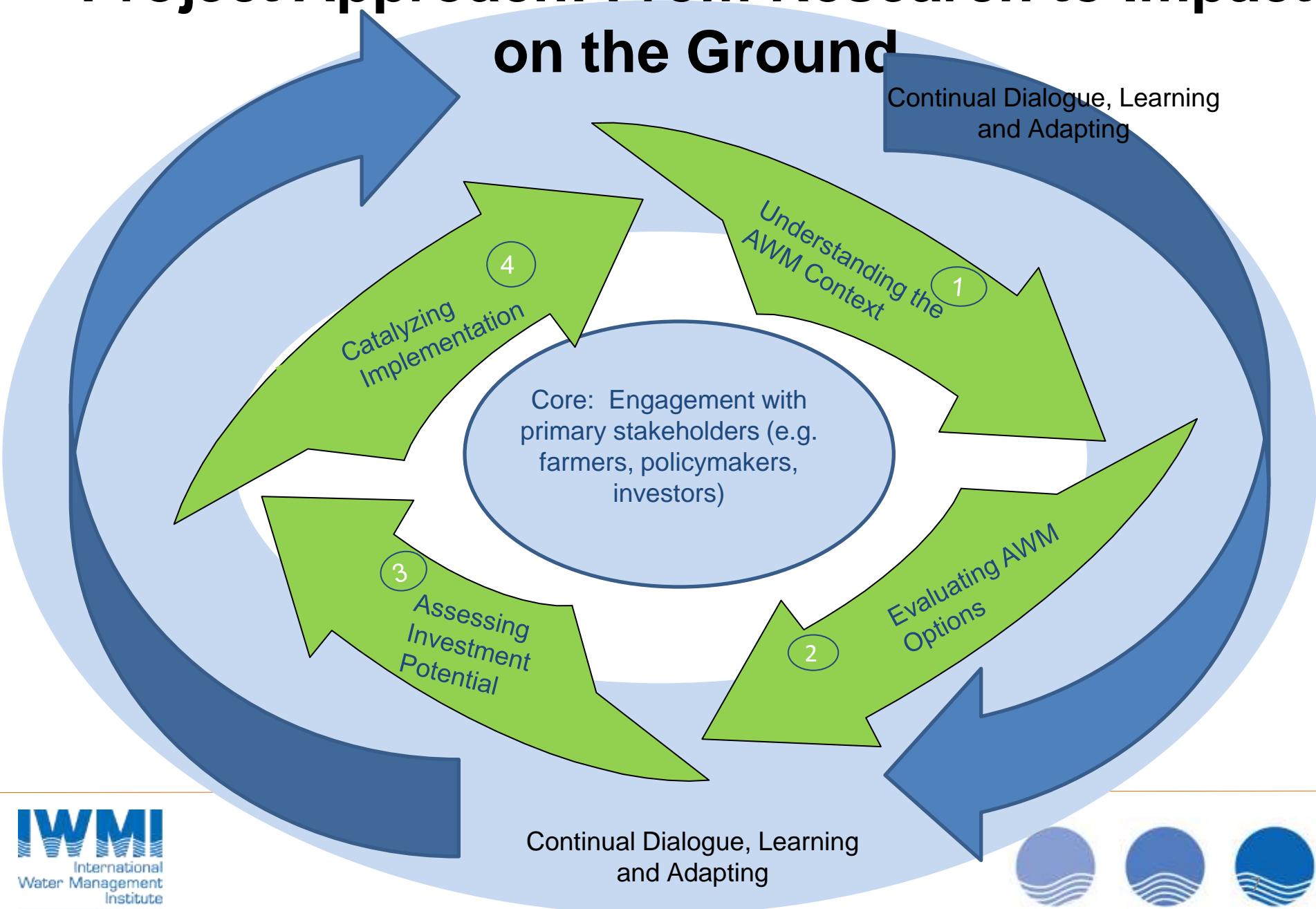
Local informal actors fragmented, preventing collective bargaining.

Water User Associations (WUAs) could enhance coordination and efficiency at the watershed scale.

Improving relations between village and national institutions will improve negotiation and planning.



Project Approach: From Research to Impact on the Ground



Content of new SSI work

- Capacity building,
- Decision support modelling (APEX, FarmSIM, SWAT) and
- Outreach in relation to expanding and supporting national programmes of small scale irrigation.
- Viewed as a strong R4D programme focusing on outcomes



Geographic Focus and phasing of new SSI work

- Ethiopia (link with AID country mission and LIVES ongoing projects)
- Tanzania (Africa Rising potential link)
 - Partners (eg. ARI; Expert Training Group...)
 - 2 Districts
 - 5 villages
- Ghana
- Start up Meeting Ethiopia, September 2013



Contact

Dr. Simon Langan

s.langan@cgiar.org

